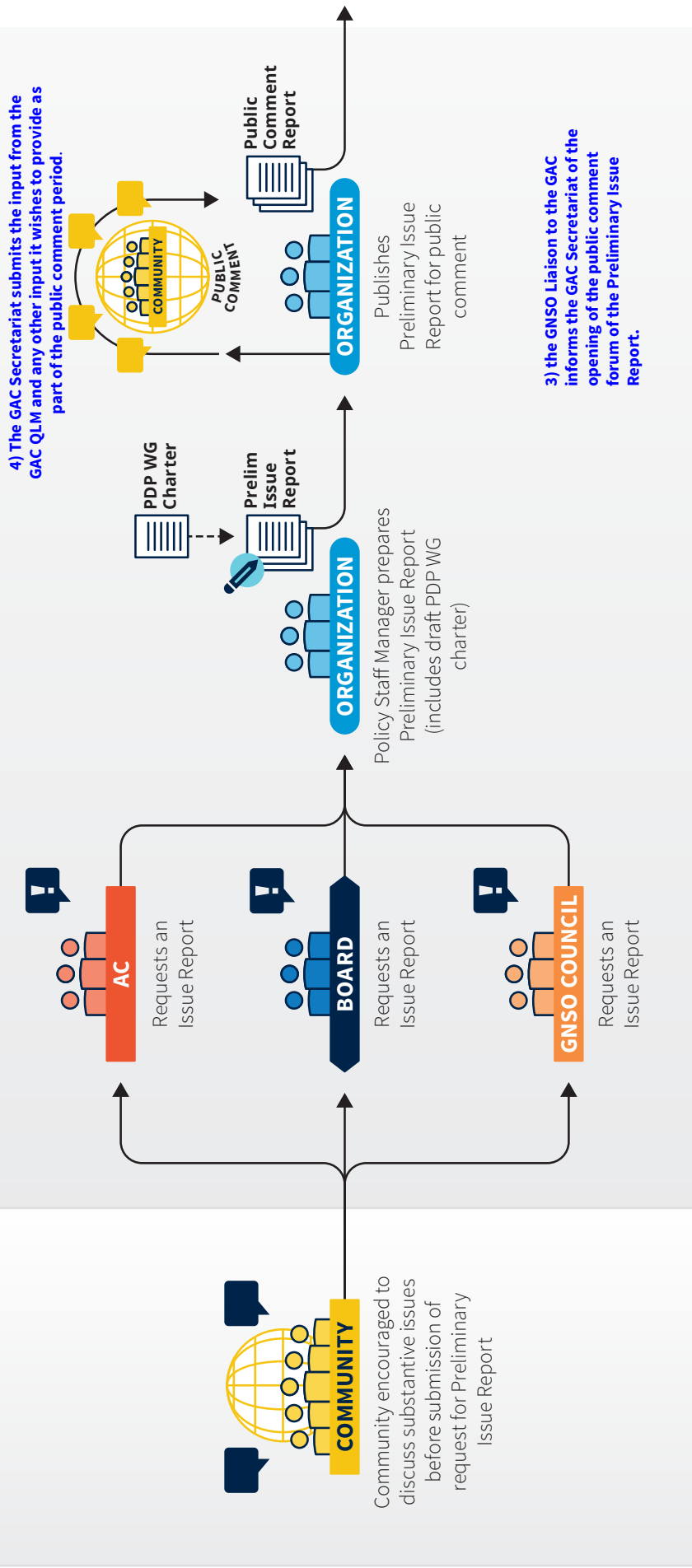


1 Issue Identification

2 Issue Scoping



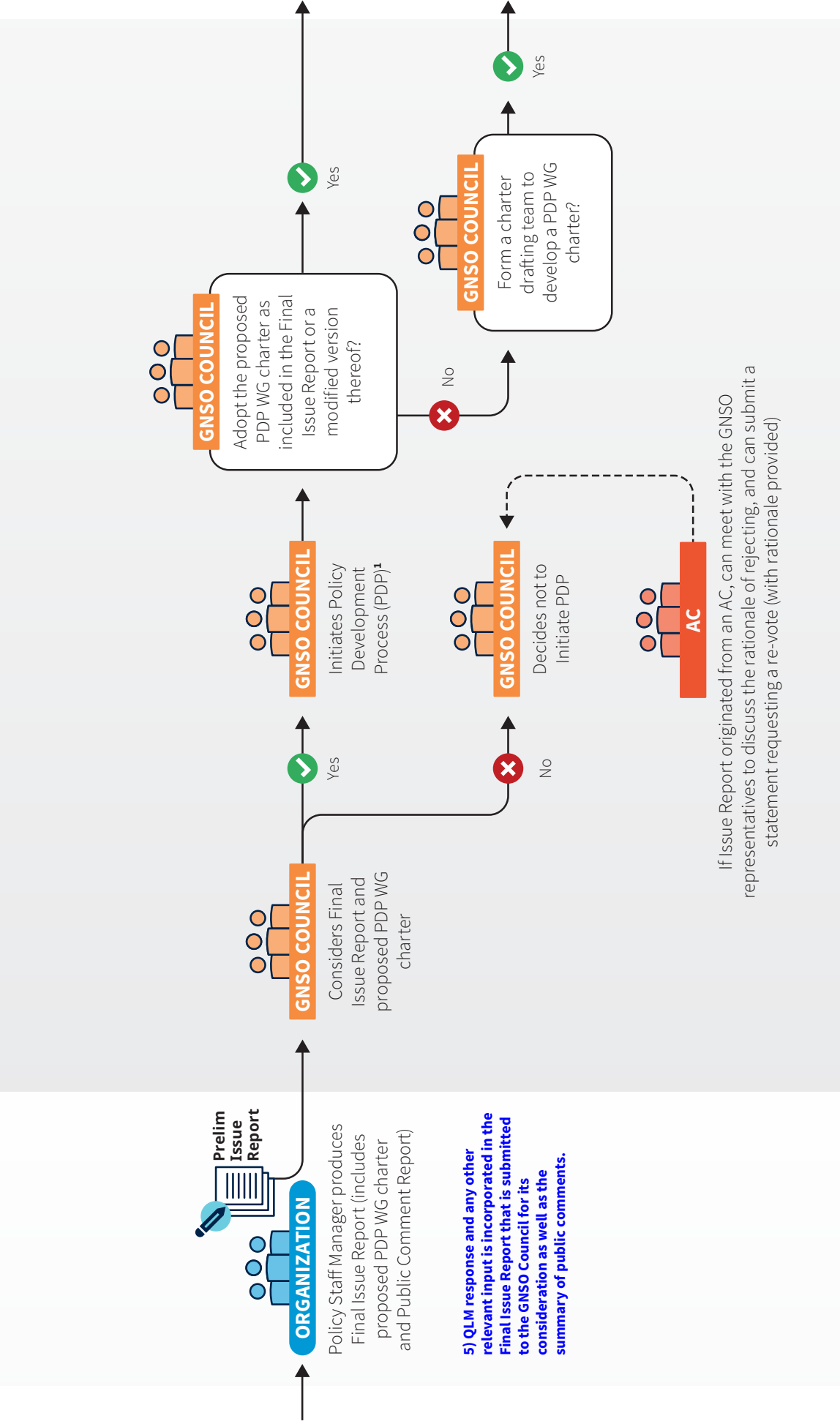
5 steps of GAC Quick Look Mechanism (QLM)

Legend		Glossary	
	Advisory Committee		Advisory Committee
	Constituency		Constituency
	Policy Development Process		Policy Development Process
	Stakeholder Groups		Stakeholder Groups
	Supporting Organizations		Supporting Organizations
	Working Group		Working Group
	ICANN Board		ICANN Organization
	Advisory Committee		Implementation Review Team
	Generic Names Supporting Organization Council		Generic Names Supporting Organization Council
	ICANN Community		ICANN Community

2 Issue Scoping cont'd



3 Initiation



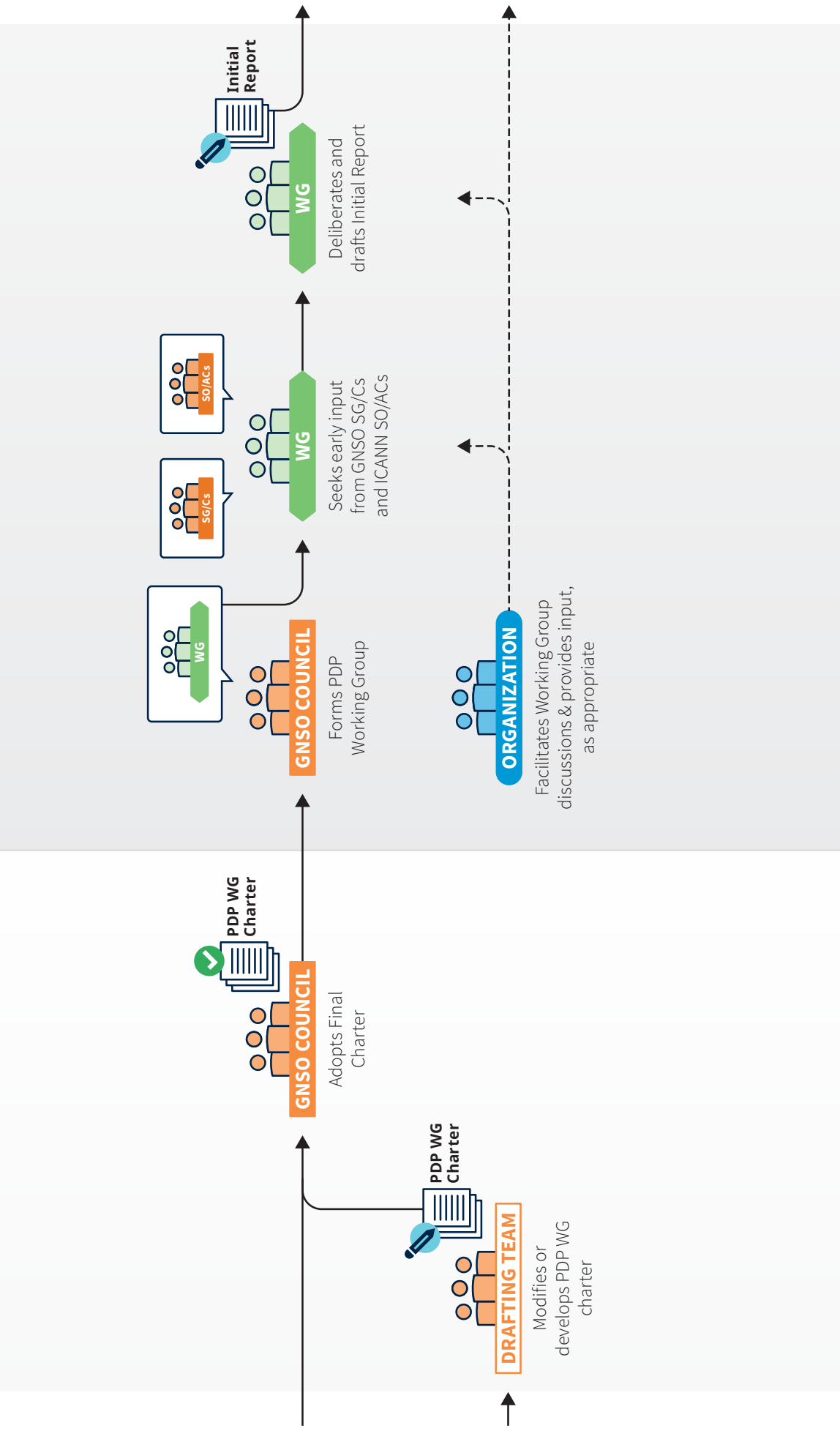
¹ Whether a vote is held, voting thresholds and the process for initiating the PDP differ depending on who requested the Issue Report. See ICANN Bylaws and GNSO PDP Manual for details.



3 Initiation cont'd

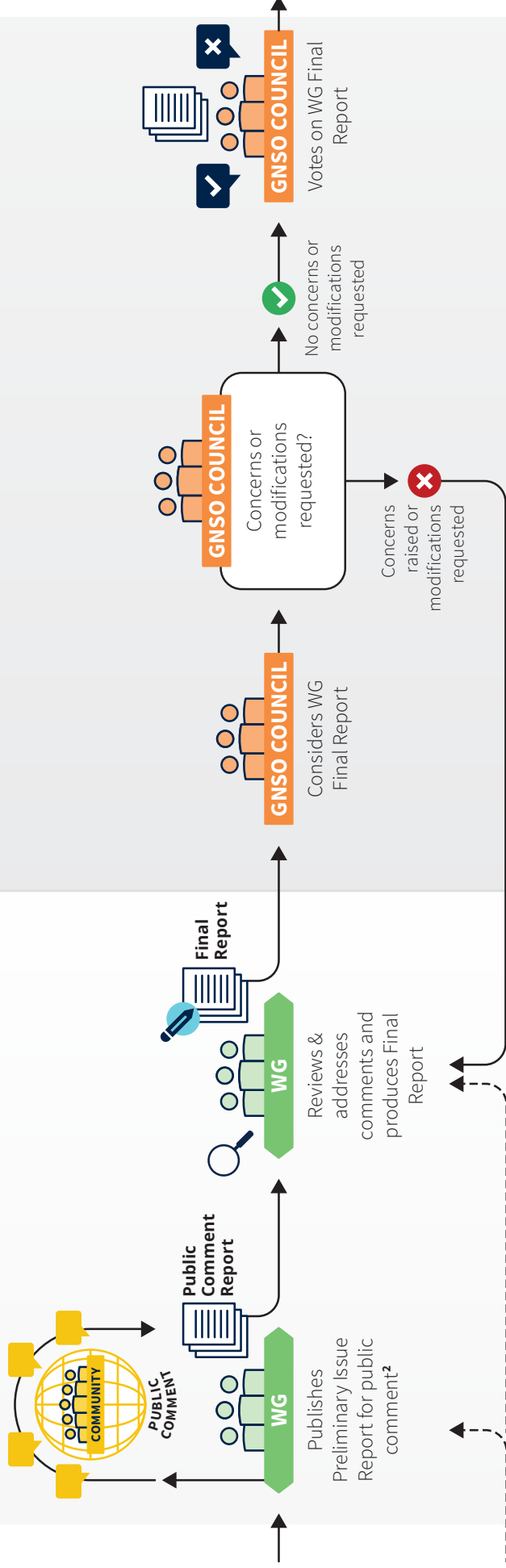


4 Working Group



4 Working Group cont'd

5 Council Deliberations

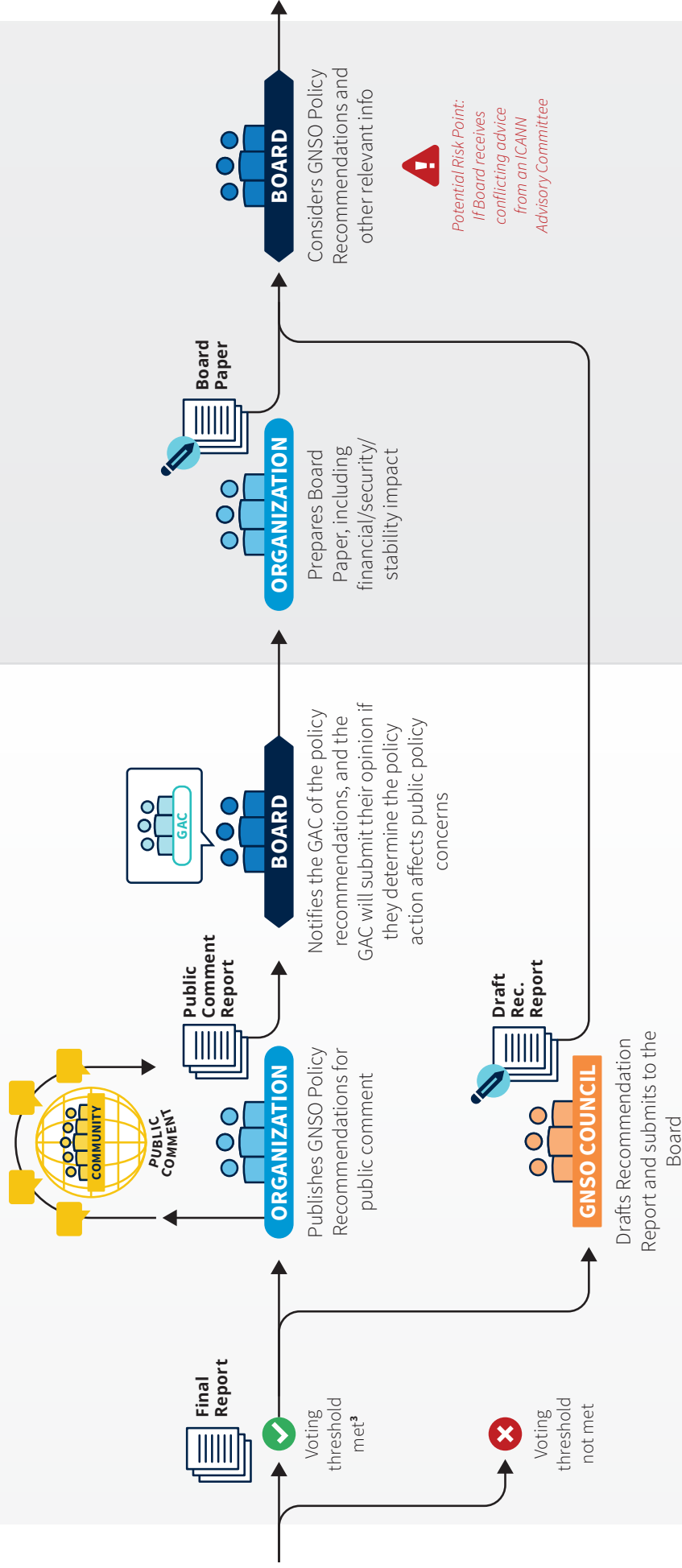


² WG may decide to publish iterations of the Initial Report or other relevant documents for public comment, before finalizing its Initial Report. WG could also use public comment to obtain input on certain issues, if that is deemed to be an effective method.

5 Council Deliberations cont'd

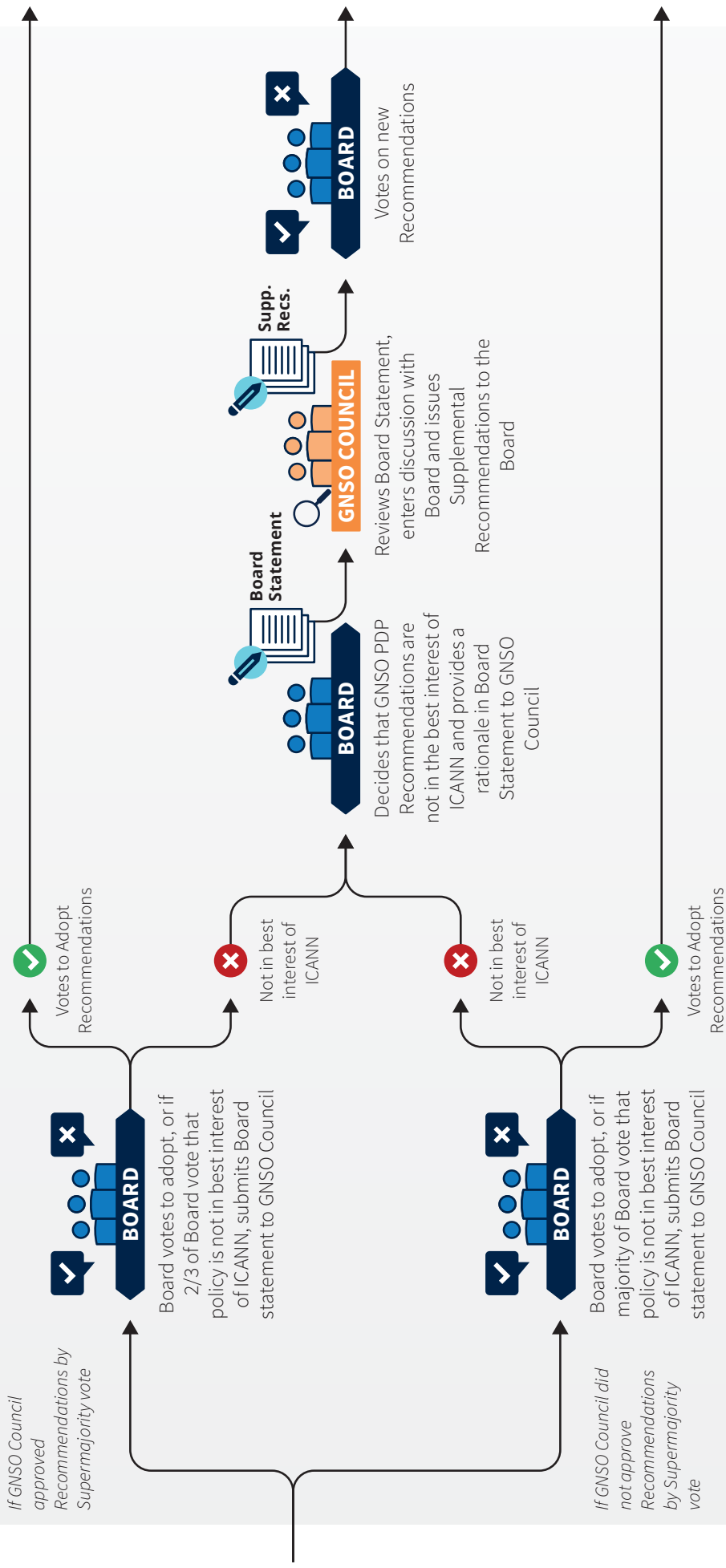


6 Board Vote



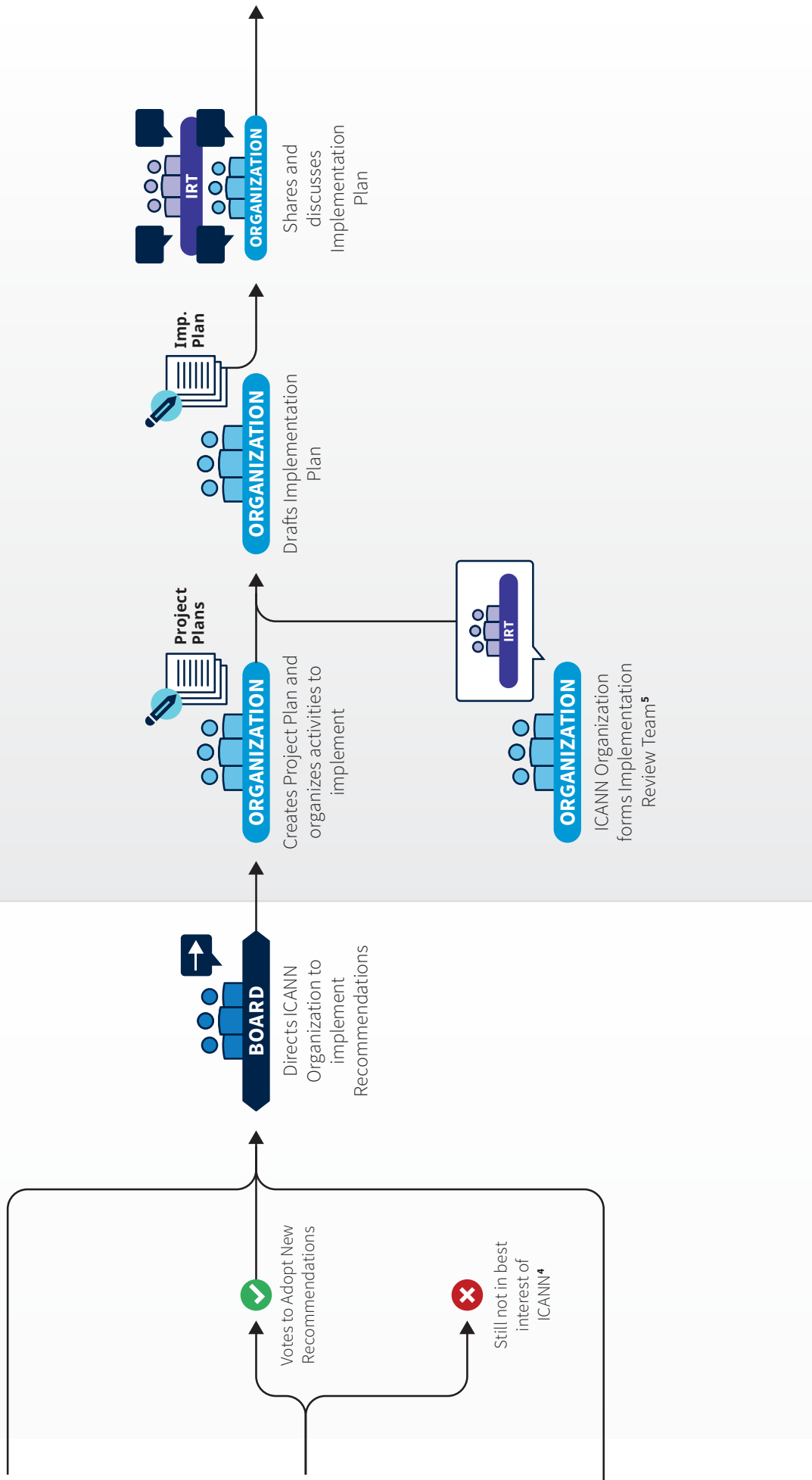
³ WG may decide to publish iterations of the Initial Report or other relevant documents for public comment, before finalizing its Initial Report. WG could also use public comment to obtain input on certain issues, if that is deemed to be an effective method.

6 Board Vote cont'd



6 Board Vote cont'd

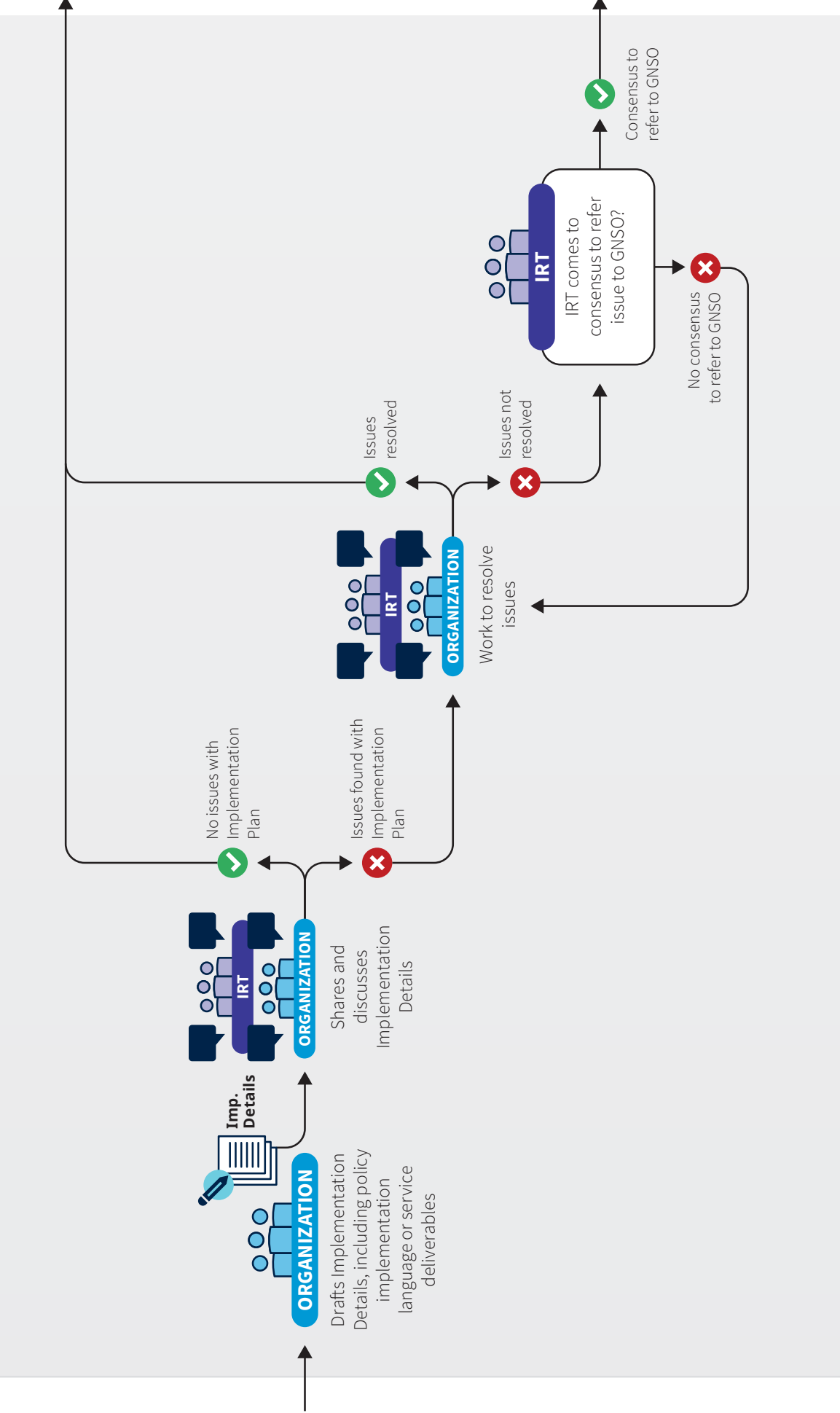
7 Planning



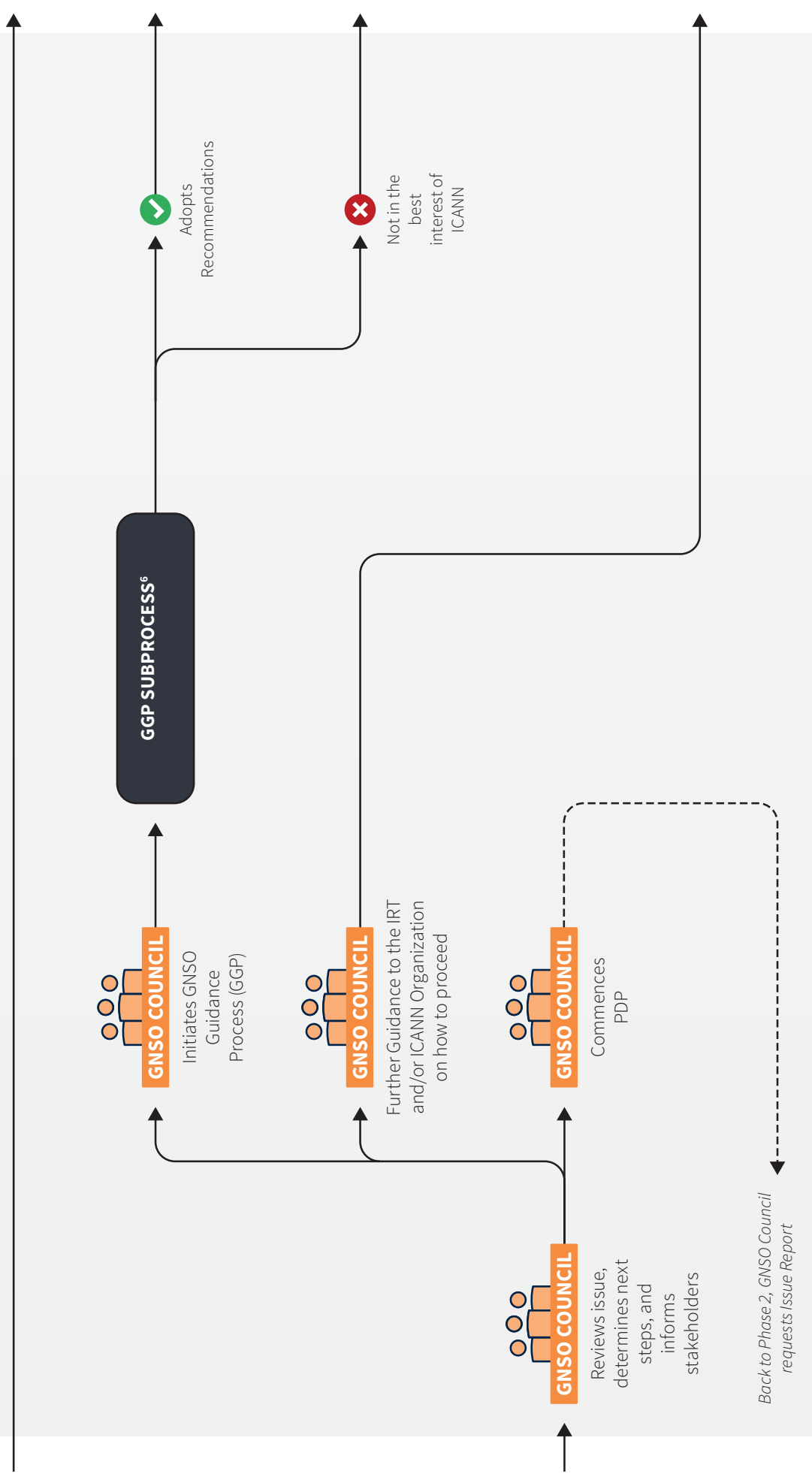
4 Other processes or procedures may be available to the Board and Community outside of the PDP to further address the issue.

5 Only in exceptional circumstances can the GNSO Council decide not to create an IRT. See Implementation Review Team (IRT) Principles & Guidelines for details.

8 Analysis & Design

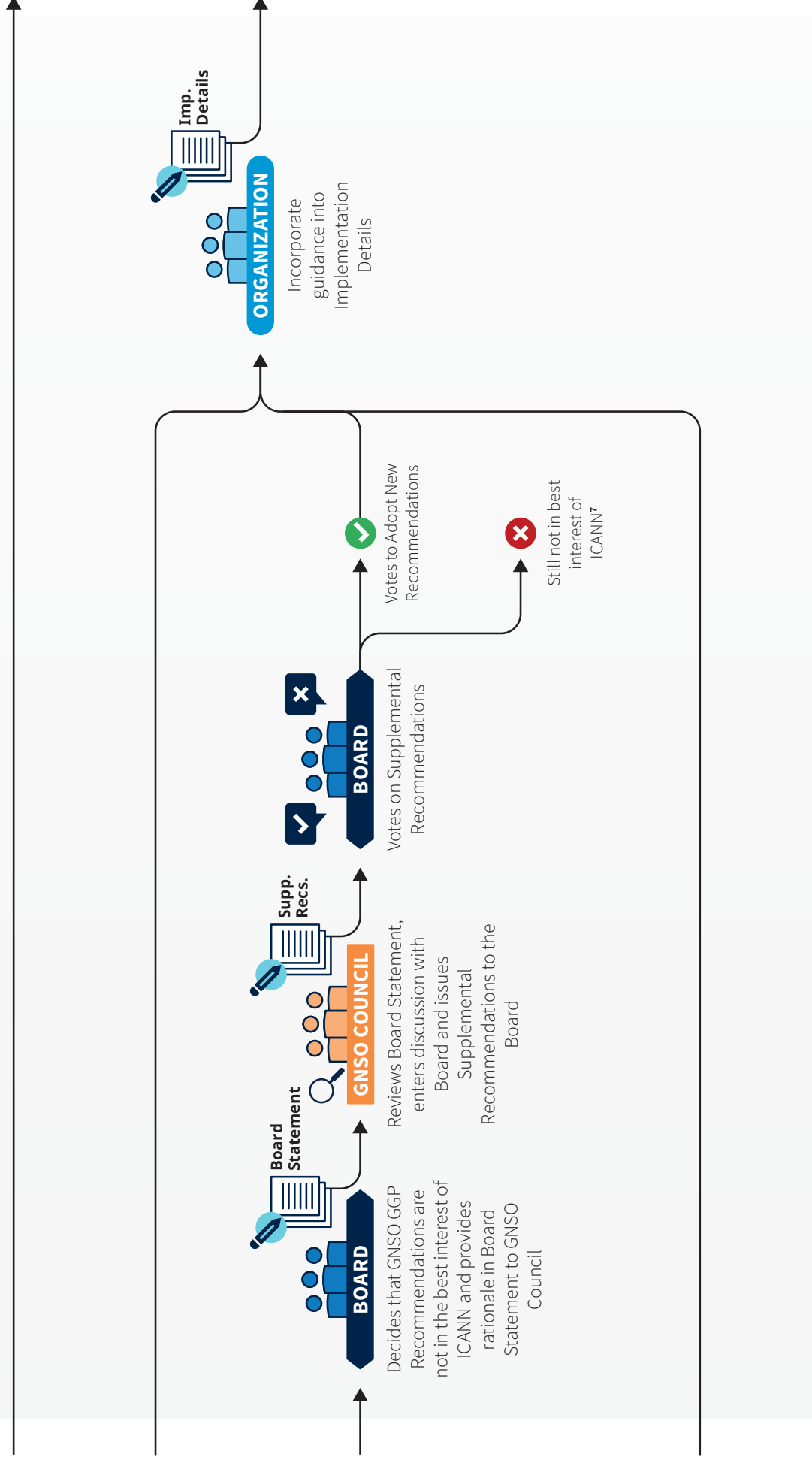


8 Analysis & Design cont'd



⁶ Refer to the ICANN Bylaws and GGP Manual for detail of GGP Process and voting thresholds, which follow a similar approach as the previously depicted Board vote on the PDP recommendations

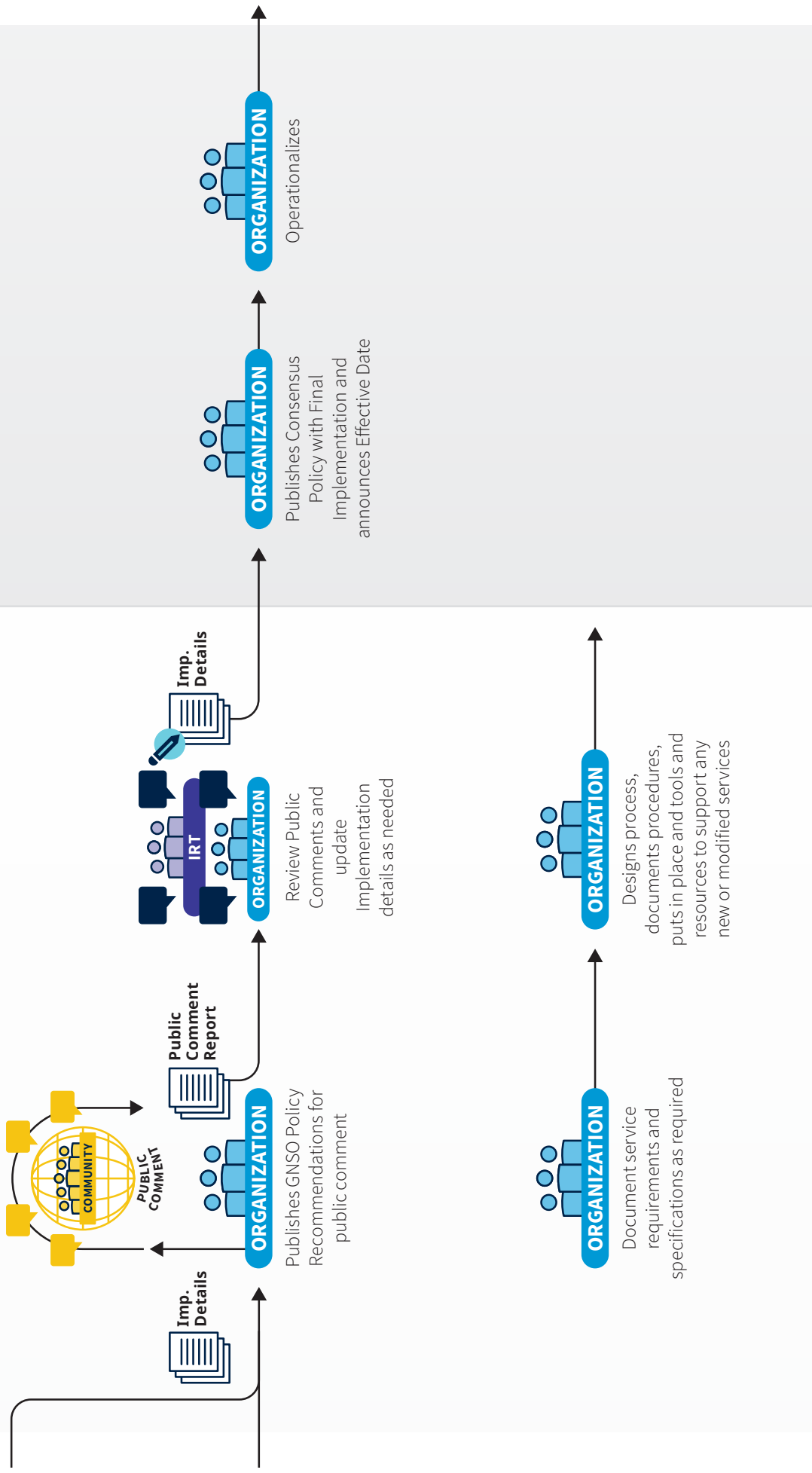
8 Analysis & Design cont'd



⁷ Other processes or procedures may be available to the Board and Community outside of the GGP and PDP to further address the issue.

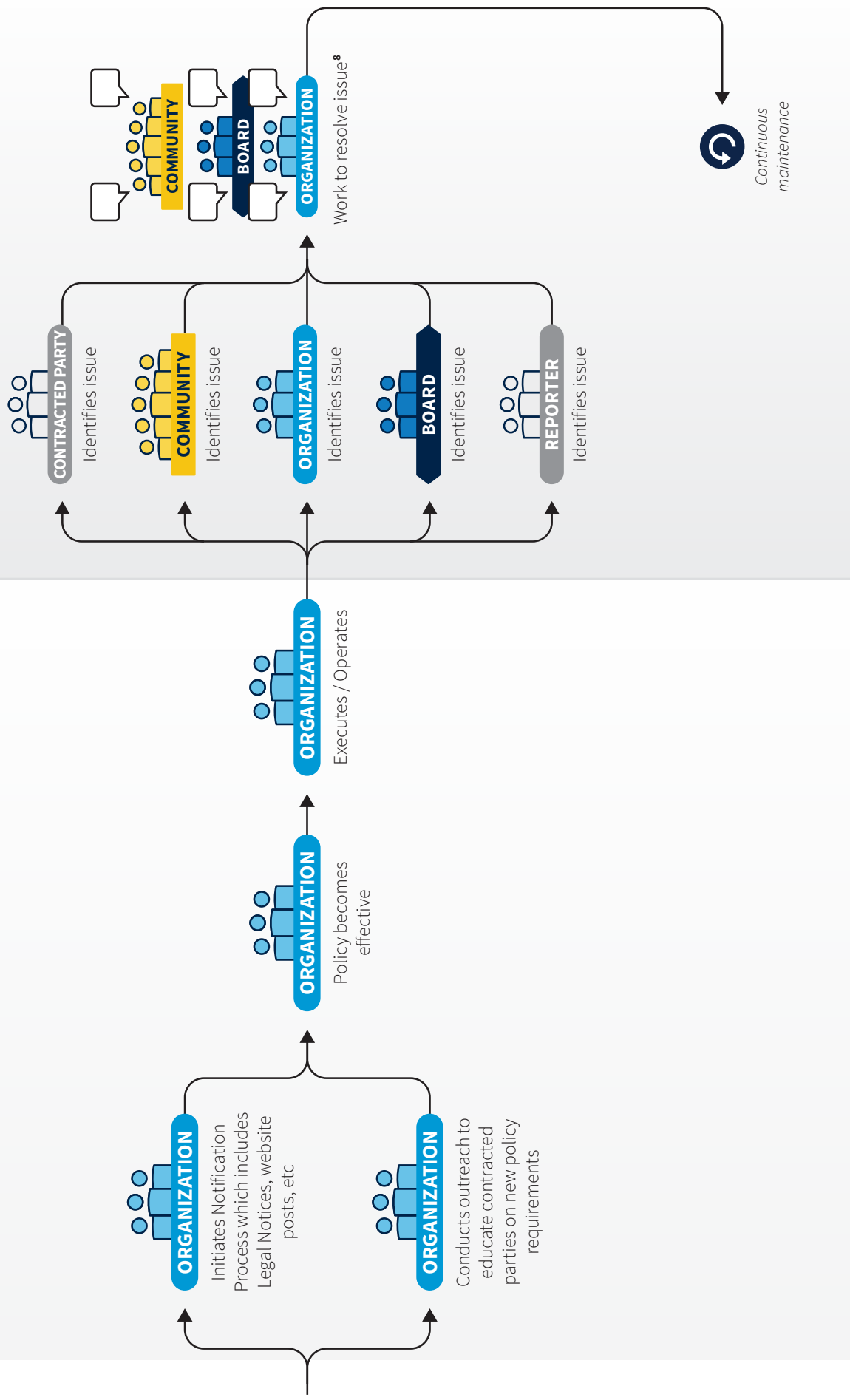
8 Analysis & Design cont'd

9 Implementation



9 Implementation cont'd

10 Post-Implementation



⁸ The path to resolution of issues raised with existing policy may vary and the relevant parties work as part of the multistakeholder model to determine the appropriate direction.